

* - INDICATES COMPONENTS NOT SUPPLIED BY YASKAWA.
 - - INDICATES CUSTOMER WIRING.
 ⏏ - CONNECTED TO THE CABINET OR PANEL.
 SEE DRAWING UDE00761 FOR CUSTOMER CONNECTION TABLES.
 SEE DRAWING UDE00748 FOR DRIVE PARAMETER SETTINGS.

REVISIONS				
REV.	DESCRIPTION	ECO #	DRAWN BY	DATE
00	INITIAL RELEASE	--	KAP	11/14/22

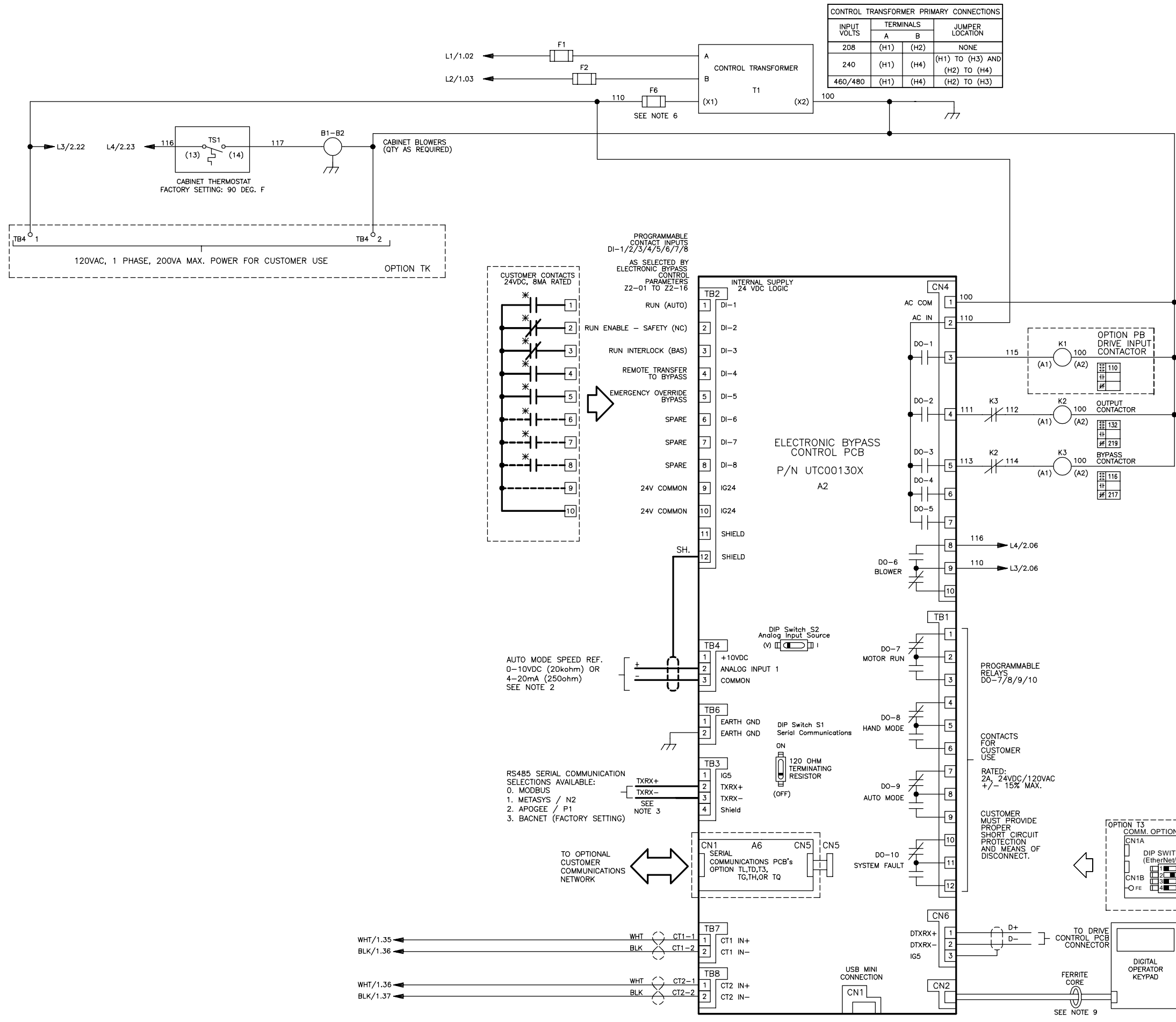
YASKAWA

DRAWN BY: K. PEOPLES	DATE: 11/14/22	TITLE: SCHEMATIC DIAGRAM FP605 TYPE 12 ELECTRONIC BYPASS
CHECKED BY: K. MALUSIC	DATE: 11/15/22	
APPROVED BY: R. JENSEN	DATE: 11/15/22	
ORIGINAL DESIGNER: K. PEOPLES	DATE: 11/14/22	

SIZE D	REVISION 00	PAGE 1 of 2
DRAWING #: DS.F6B2.01		

THIS DOCUMENT AND INFORMATION CONTAINED IN IT ARE CONFIDENTIAL, AND CANNOT BE COPIED OR DISCLOSED IN WHOLE OR IN PART WITHOUT THE EXPRESS WRITTEN CONSENT OF YASKAWA AMERICA INC.

INPUT VOLTS	TERMINALS		JUMPER LOCATION
	A	B	
208	(H1)	(H2)	NONE
240	(H1)	(H4)	(H1) TO (H3) AND (H2) TO (H4)
460/480	(H1)	(H4)	(H2) TO (H3)



- NOTES:
1. CUSTOMER TO CONNECT THE FIELD GROUND WIRING TO THE CABINET GROUND LUG.
 2. INSULATED TWISTED SHIELDED WIRE IS REQUIRED. SHIELD TO CONNECT TO PROPER TERMINAL AS SHOWN. CONNECT THE SHIELD ONLY AT THIS END. STUB AND ISOLATE THE OTHER END. DO NOT RUN THESE WIRES IN THE SAME CONDUIT AS THE AC POWER AND THE AC CONTROL WIRES. KEEP ALL WIRING UNDER 50m IN LENGTH.
 3. INSULATED TWISTED SHIELDED WIRE IS REQUIRED. SHIELD TO BE CONNECTED TO PROPER TERMINAL ON CUSTOMER END. STUB AND ISOLATE THE OTHER END. DO NOT RUN THESE WIRES IN THE SAME CONDUIT AS THE AC POWER AND THE AC CONTROL WIRES.
 4. WHEN INPUT CIRCUIT BREAKER OPTION PE, PC OR PM IS NOT PROVIDED, BRANCH CIRCUIT PROTECTION MUST BE SUPPLIED BY THE INSTALLER.
 5. CHANGING A1-03 TO "2220" WILL PROGRAM THE DRIVE AND BYPASS PARAMETERS TO THEIR FACTORY DEFAULT SETTINGS.
 6. WITH A CONTROL TRANSFORMER, T1, POWER RATING 350VA OR GREATER, SECONDARY FUSE F6 IS ADDED.
 7. DRIVE INPUT FUSES F3, F4, F5 ARE INCLUDED WITH OPTION PE, PC OR PM FOR BASE NUMBERS B180-B302.
 8. CONDUIT FITTINGS/HUBS SHALL COMPLY WITH THE "STANDARD FOR CONDUIT, TUBING, AND CABLE FITTINGS, UL 514B". OR CONDUIT FITTINGS HAVING THE SAME ENVIRONMENTAL RATING AS THE ENCLOSURE SHALL BE USED.
 9. ROUTE COMMUNICATION CABLE THROUGH FERRITE CORE TWICE.

YASKAWA

THIS DOCUMENT AND INFORMATION CONTAINED IN IT ARE CONFIDENTIAL, AND CANNOT BE COPIED OR DISCLOSED IN WHOLE OR IN PART WITHOUT THE EXPRESS WRITTEN CONSENT OF YASKAWA AMERICA INC.

DRAWN BY:	K. PEOPLES	DATE:	11/14/22	TITLE:	SCHEMATIC DIAGRAM FP605 TYPE 12 ELECTRONIC BYPASS		
CHECKED:	K. MALUSIC	DATE:	11/15/22	SIZE:	D	REVISION:	00
APPROVED:	R. JENSEN	DATE:	11/15/22	PAGE:	2 of 2		
ORIGINAL DESIGN:	K. PEOPLES	DATE:	11/14/22	DRAWING #:	DS.F6B2.01		